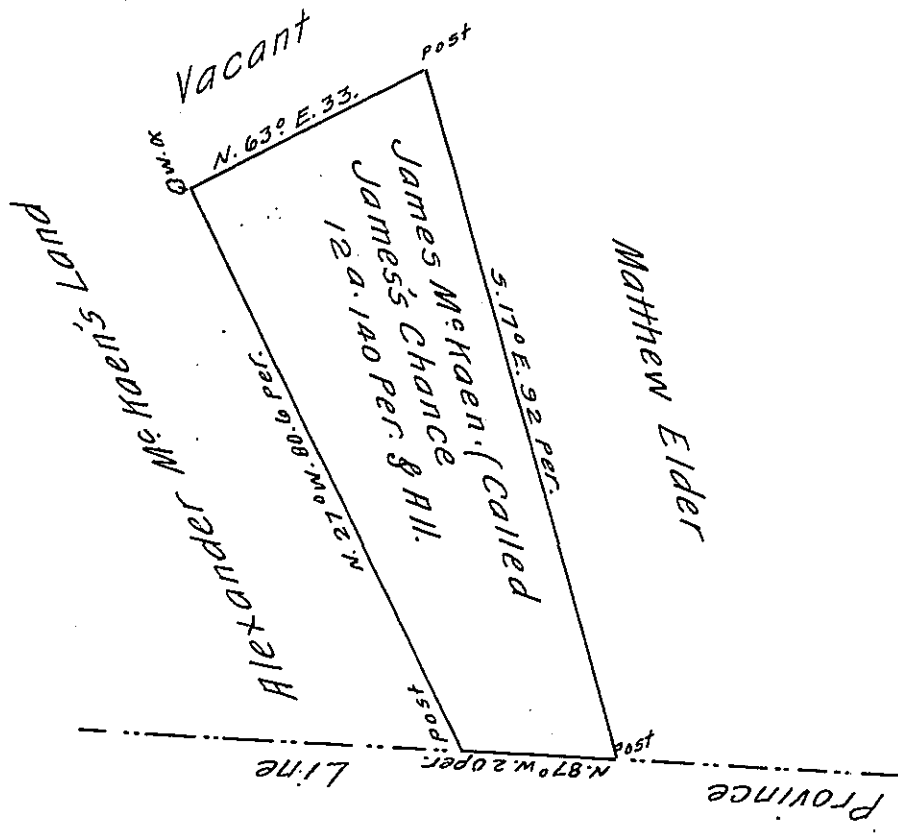


Note, the said Tract is in the Honble The Proprietaries Manor of Mashe.



Situated in Hamilton Bann Township York County and Surveyed August 10<sup>th</sup> 1772. By Vertue of a Warrant for 13<sup>a</sup> bearing Date April 23<sup>d</sup> 1772.

To John Lukens Esq<sup>r</sup> }  
Surveyor General

By Arch<sup>d</sup> McClean D<sup>y</sup> 5<sup>r</sup>

Call it 13 Acres.

IN TESTIMONY that the above is a copy of the original remaining on file in the Department of Internal Affairs of Pennsylvania, made conformably to an Act of Assembly approved the 16th day of February, 1833, I have hereunto set my Hand and caused the Seal of said Department to be affixed at Harrisburg, this eighteenth day of July 1910.

*Henry Howell*  
Secretary of Internal Affairs.